

TUBELITE, INC.

14000 SERIES STOREFRONT FRAMING

TUBELITE
DEPENDABLE

LEADERS IN ECO-EFFICIENT STOREFRONT,
CURTAINWALL AND ENTRANCE SYSTEMS

3056 WALKER RIDGE DRIVE N.W.
WALKER, MICHIGAN 49544
PH: 800 866 2227 FX: 616 301 0008

GENERAL NOTES:

- THE PRODUCT SHOWN HEREIN IS DESIGNED AND MANUFACTURED TO COMPLY WITH THE CURRENT FLORIDA BUILDING CODE (FBC), EXCLUDING HVHZ AND HAS BEEN EVALUATED ACCORDING TO THE FOLLOWING:
 - ASTM E 283-04
 - ASTM E 330-02
 - ASTM E 331-00
 - ASTM E 547-09
 - AAMA 501-05
- ADEQUACY OF THE EXISTING STRUCTURAL CONCRETE/MASONRY, 2X FRAMING AND METAL STUD FRAMING AS A MAIN WIND FORCE RESISTING SYSTEM CAPABLE OF WITHSTANDING AND TRANSFERRING APPLIED PRODUCT LOADS TO THE FOUNDATION IS THE RESPONSIBILITY OF THE ENGINEER OR ARCHITECT OF RECORD FOR THE PROJECT OF INSTALLATION.
- 1X AND 2X BUCKS (WHEN USED) SHALL BE DESIGNED AND ANCHORED TO PROPERLY TRANSFER ALL LOADS TO THE STRUCTURE. BUCK DESIGN AND INSTALLATION IS THE RESPONSIBILITY OF THE ENGINEER OR ARCHITECT OF RECORD FOR THE PROJECT OF INSTALLATION.
- THE INSTALLATION DETAILS DESCRIBED HEREIN ARE GENERIC AND MAY NOT REFLECT ACTUAL CONDITIONS FOR A SPECIFIC SITE. IF SITE CONDITIONS CAUSE INSTALLATION TO DEVIATE FROM THE REQUIREMENTS DETAILED HEREIN, A LICENSED ENGINEER OR ARCHITECT SHALL PREPARE SITE SPECIFIC DOCUMENTS FOR USE WITH THIS DOCUMENT.
- APPROVED IMPACT PROTECTIVE SYSTEM **IS REQUIRED** ON THIS PRODUCT IN AREAS REQUIRING IMPACT RESISTANCE.
- FRAME MATERIAL: ALUMINUM 6063-T5 MINIMUM
- ALL STRUCTURAL MATERIALS & DISSIMILAR METALS SHALL BE PROTECTED, TREATED, PAINTED, COATED, AND/OR ISOLATED AS REQUIRED IN THE APPLICABLE SECTIONS OF THE CURRENT FLORIDA BUILDING CODE AND REFERENCED DESIGN SPECIFICATIONS.
- GLASS MEETS THE REQUIREMENTS OF ASTM E 1300-04 GLASS CHARTS. SEE SHEET 3 FOR GLAZING DETAILS.
- GLASS SHALL BE SET WITH THE USE OF SETTING BLOCKS IN ACCORDANCE WITH CHAPTER 24 OF THE CURRENT FLORIDA BUILDING CODE.
- GLAZING GASKETS SHALL MEET THE MINIMUM PERFORMANCE REQUIREMENTS AS APPLICABLE IN CHAPTER 24 OF THE FLORIDA BUILDING CODE.

TABLE OF CONTENTS		
SHEET	REVISION	SHEET DESCRIPTION
1	-	GENERAL NOTES, TABLE OF CONTENTS & GLAZING DETAIL
2	-	ELEVATIONS AND ANCHORS LAYOUT
3	-	GLAZING DETAILS AND DESIGN PRESSURE TABLE
4	-	HORIZONTAL DETAILS
5	-	VERTICAL DETAILS AND DESIGN PRESSURES
6	-	CORNER DETAILS
7	-	DOOR DETAILS
8	-	DOOR DESIGN PRESSURE TABLES
9	-	DOOR DESIGN PRESSURE TABLES
10	-	ANCHOR SCHEDULE & INSTALLATION NOTES
11	-	ANCHOR DETAILS

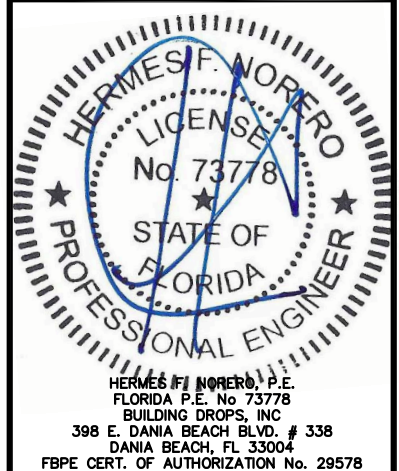
MISSILE IMPACT RATING	DESIGN PRESSURE
NOT IMPACT RATED	SEE SHEETS 2, 5, 8 AND 9 FOR DESIGN PRESSURE LIMITATIONS. THE LOWEST APPLICABLE VALUE SHALL BE APPLIED TO THE ENTIRE SYSTEM.

TITLE: 14000 SERIES STOREFRONT FRAMING
GENERAL NOTES, TABLE OF CONTENTS & GLAZING DETAILS

PREPARED BY: BUILDING DROPS, INC.
398 E. DANIA BEACH BLVD., STE. 338
DANIA BEACH, FL 33004
PH: (954)399-8478
FAX: (954)744-4738
WEB: www.buildingdrops.com

REMARKS	BY	DATE

THE INSTALLATION DETAILS DESCRIBED HEREIN ARE GENERIC AND MAY NOT REFLECT ACTUAL CONDITIONS FOR A SPECIFIC SITE. IF SITE CONDITIONS CAUSE INSTALLATION TO DEVIATE FROM THE REQUIREMENTS DETAILED HEREIN, A LICENSED ENGINEER OR ARCHITECT SHALL PREPARE SITE SPECIFIC DOCUMENTS FOR USE WITH THIS DOCUMENT



FL #:
FL16992

DATE: **03.26.19**

DWG. BY: **RV** CHK. BY: **HFN**

SCALE: **NTS**

DWG. #: **TLI004**

SECTION
1
OF 11

TUBELITE®

DEPENDABLE

LEADERS IN ECO-EFFICIENT STOREFRONT,
CURTAINWALL AND ENTRANCE SYSTEMS

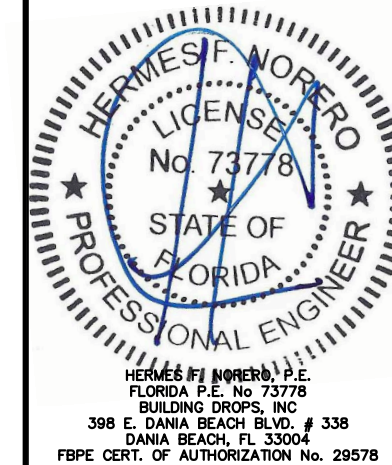
3056 WALKER RIDGE DRIVE N.W.
WALKER, MICHIGAN 49544
PH: 800 866 2227 FX: 616 301 0008

TITLE: 14000 SERIES STOREFRONT FRAMING ELEVATIONS AND ANCHOR LAYOUT

PREPARED BY: BUILDING DROPS, INC.
398 E. DANIA BEACH BLVD., STE. 338
DANIA BEACH, FL 33004
PH: (954)399-8478
FAX: (954)744-4738
WEB: www.buildingdrops.com

REMARKS	BY	DATE

THE INSTALLATION DETAILS DESCRIBED HEREIN ARE GENERIC AND MAY NOT REFLECT ACTUAL CONDITIONS FOR A SPECIFIC SITE. IF SITE CONDITIONS CAUSE INSTALLATION TO DEVIATE FROM THE REQUIREMENTS DETAILED HEREIN, A LICENSED ENGINEER OR ARCHITECT SHALL PREPARE SITE SPECIFIC DOCUMENTS FOR USE WITH THIS DOCUMENT



FL #: **FL16992**

DATE: **03.26.19**

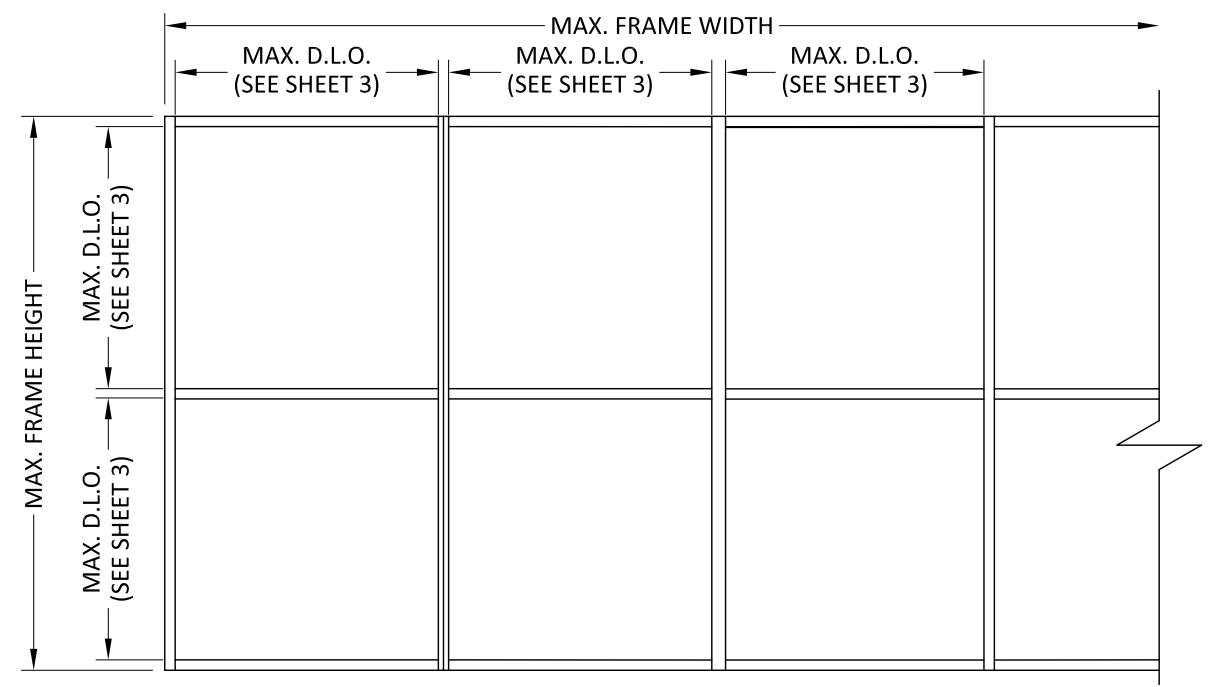
DWG. BY: **RV** CHK. BY: **HFN**

SCALE: **NTS**

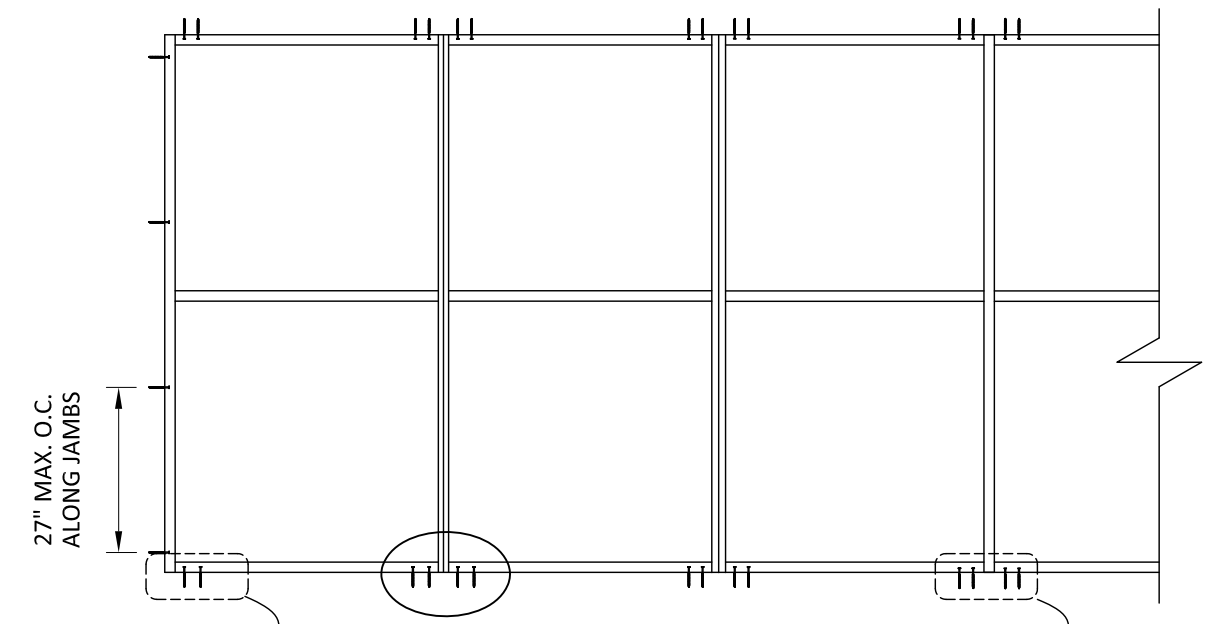
DWG. #: **TLI004**

SECTION **2**

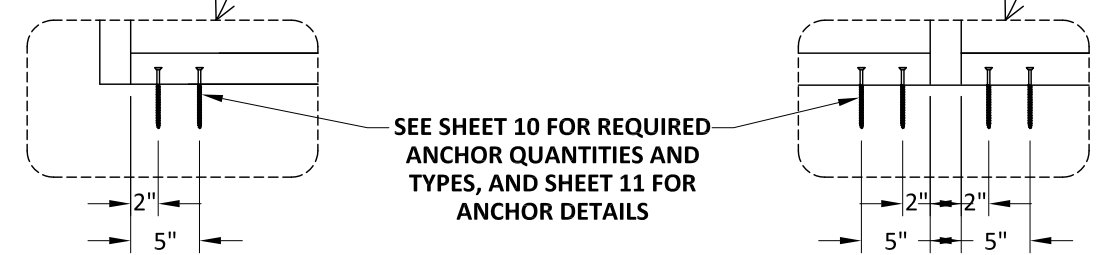
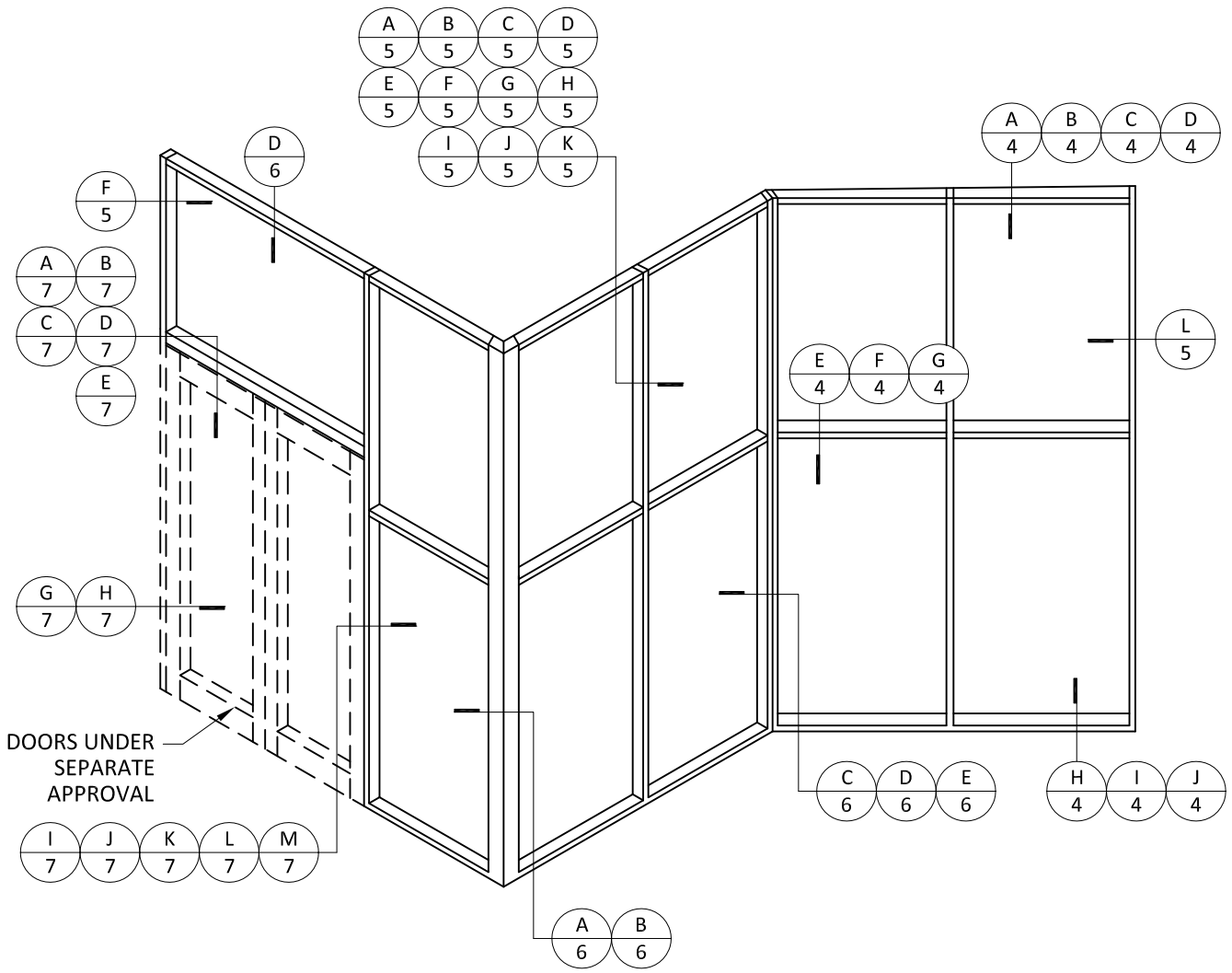
OF 11



A STOREFRONT ELEVATION



B STOREFRONT ELEVATION
TYPICAL ANCHOR LAYOUT



4/22/2019 6:23 PM

s:\projects\tubelite, inc\bc-19-0251.1 - fbc submittal - sf, ww, cw doors and cassette\dwgs\c-14000\title04_2019-04-19.dwg

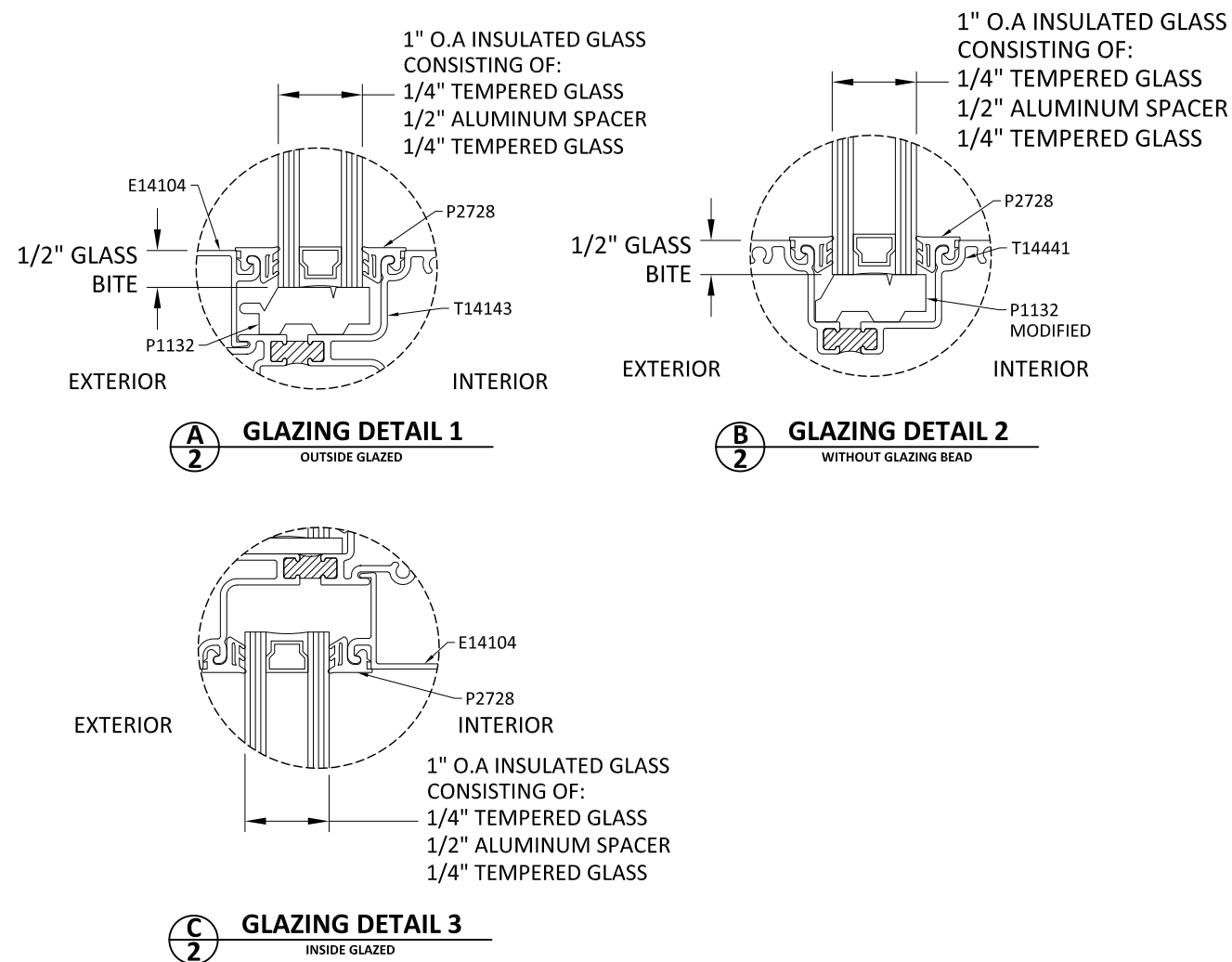
GLAZING DETAILS AND DESIGN PRESSURE TABLE

TUBELITE®
DEPENDABLE
LEADERS IN ECO-EFFICIENT STOREFRONT,
CURTAINWALL AND ENTRANCE SYSTEMS

3056 WALKER RIDGE DRIVE N.W.
WALKER, MICHIGAN 49544
PH: 800 866 2227 FX: 616 301 0008

GLASS LOAD CAPACITY (PSF)		
DAYLIGHT OPENING DIMS. (in)		DESIGN PRESSURE
DLO WIDTH	DLO HEIGHT	EXT. (+) INT. (-)
25	46.3125	45.0
28		45.0
31		44.5
34		40.6
37		37.3
40		34.5
43		32.1
46		30.0
49		31.5
52		32.1
55	29.1	
58	26.6	
25	49.625	45.0
28		45.0
31		43.4
34		40.6
37		37.3
40		34.5
43		32.1
46		30.0
49		28.2
52		29.1
55	30.7	
58	27.9	
25	55.625	45.0
28		44.2
31		41.4
34		39.2
37		37.3
40		34.5
43		32.1
46		30.0
49		28.2
52		26.5
55	25.1	
25	61.625	45.0
28		42.8
31		39.9
34		37.6
37		35.7
40		34.2
43		32.1
46		30.0
49		28.2
52		26.5

GLASS LOAD CAPACITY (PSF)		
DAYLIGHT OPENING DIMS. (in)		DESIGN PRESSURE
DLO WIDTH	DLO HEIGHT	EXT. (+) INT. (-)
25	67.625	45.0
28		41.7
31		38.7
34		36.4
37		34.4
40		32.8
43		31.6
46		30.0
49		28.2
52		26.6
25	73.625	44.6
28		40.8
31		37.8
34		35.4
37		33.4
40		31.8
43		30.4
46		28.9
49		26.6
52		25.1
25	79.625	43.9
28		40.1
31		37.1
34		34.6
37		32.6
40		30.9
43		29.3
46		27.9
49		26.6
52		25.1
25	85.625	39.5
28		36.4
31		34.0
34		31.9
37		29.9
40		28.2
43		26.6
46		25.1
49		23.6
52		22.1
25	91.625	38.6
28		35.5
31		32.5
34		29.5
37		26.6
40		23.6
43		20.6
46		17.6
49		14.6
52		11.6
25	97.625	38.2
28		35.2
31		32.2
34		29.2
37		26.2
40		23.2
43		20.2
46		17.2
49		14.2
52		11.2



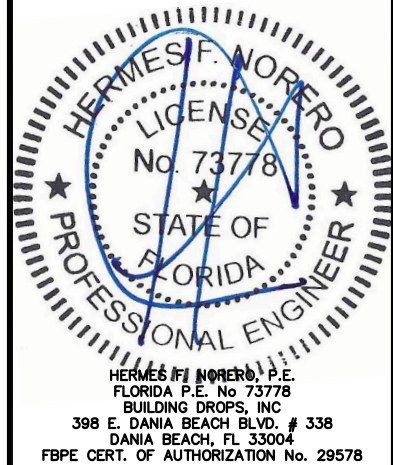
- GLAZING NOTES:**
- GLASS TYPE COMPLIES WITH ASTM E1300 REQUIREMENTS AS WELL AS APPLICABLE SAFETY GLAZING REQUIREMENTS PER THE FBC. TEMPER AND SAFETY GLAZING REQUIREMENTS SHALL BE REVIEWED ON A SITE SPECIFIC BASIS.
 - SETTING BLOCK DUROMETER HARDNESS OF 70-90 (SHORE A) AS REFERENCED IN FBC CHAPTER 24.
 - TWO APPROVED SETTING BLOCKS SHALL BE USED FOR GLASS WIDER THAN 36" AS PER FBC CHAPTER 24.
 - D.L.O. AND DESIGN PRESSURES MAY NOT EXCEED MAX VALUES IN SIZE CHARTS.

TITLE: 14000 SERIES STOREFRONT FRAMING GLAZING DETAILS AND DESIGN PRESSURE TABLE

PREPARED BY: BUILDING DROPS, INC.
398 E. DANIA BEACH BLVD., STE. 338
DANIA BEACH, FL 33004
PH: (954) 399-8478
FAX: (954) 744-4738
WEB: www.buildingdrops.com

REMARKS	BY	DATE

THE INSTALLATION DETAILS DESCRIBED HEREIN ARE GENERIC AND MAY NOT REFLECT ACTUAL CONDITIONS FOR A SPECIFIC SITE. IF SITE CONDITIONS CAUSE INSTALLATION TO DEVIATE FROM THE REQUIREMENTS DETAILED HEREIN, A LICENSED ENGINEER OR ARCHITECT SHALL PREPARE SITE SPECIFIC DOCUMENTS FOR USE WITH THIS DOCUMENT



FL #: **FL16992**

DATE: **03.26.19**

DWG. BY: **RV** CHK. BY: **HFN**

SCALE: **NTS**

DWG. #: **TLI004**

SECTION **3**

HORIZONTAL DETAILS

TUBELITE®
DEPENDABLE
LEADERS IN ECO-EFFICIENT STOREFRONT,
CURTAINWALL AND ENTRANCE SYSTEMS

3056 WALKER RIDGE DRIVE N.W.
WALKER, MICHIGAN 49544
PH: 800 866 2227 FX: 616 301 0008

TITLE: 14000 SERIES
STOREFRONT FRAMING
OUTSIDE GLAZED
HORIZONTAL DETAILS

PREPARED BY: BUILDING DROPS, INC.
398 E. DANIA BEACH BLVD., STE. 338
DANIA BEACH, FL 33004
PH: (954) 399-8478
FAX: (954) 744-4738
WEB: www.buildingdrops.com

REMARKS	BY	DATE

THE INSTALLATION DETAILS DESCRIBED HEREIN ARE GENERIC AND MAY NOT REFLECT ACTUAL CONDITIONS FOR A SPECIFIC SITE. IF SITE CONDITIONS CAUSE INSTALLATION TO DEVIATE FROM THE REQUIREMENTS DETAILED HEREIN, A LICENSED ENGINEER OR ARCHITECT SHALL PREPARE SITE SPECIFIC DOCUMENTS FOR USE WITH THIS DOCUMENT



FL #: **FL16992**

DATE: **03.26.19**

DWG. BY: **RV** CHK. BY: **HFN**

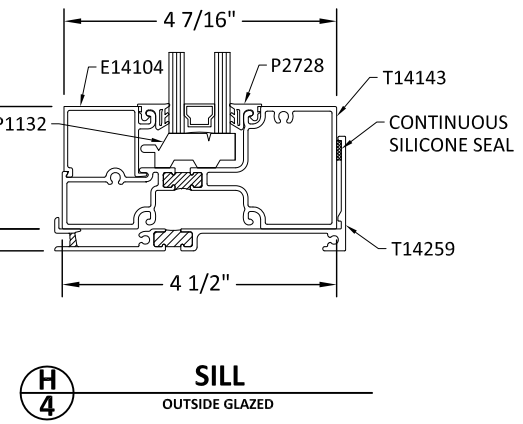
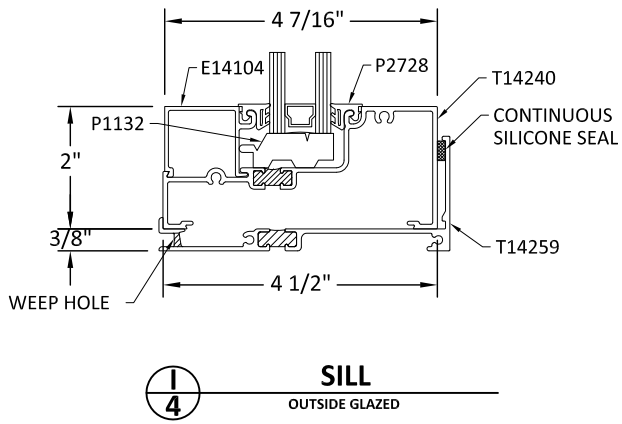
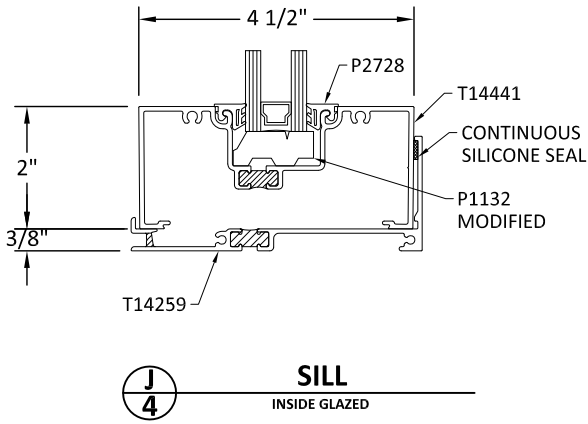
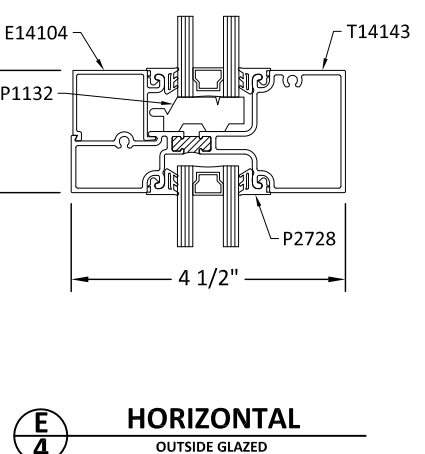
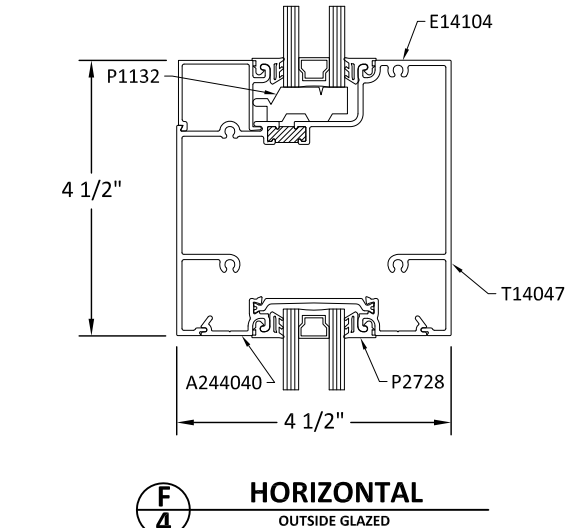
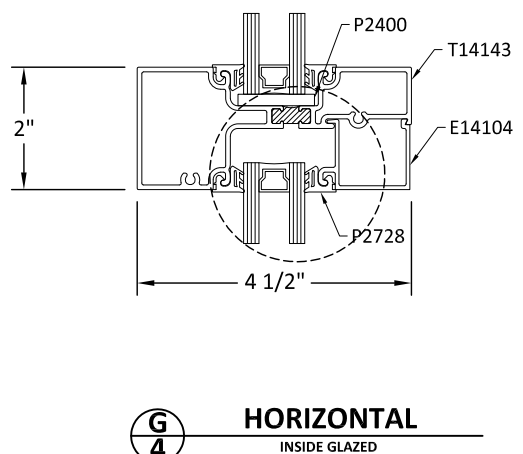
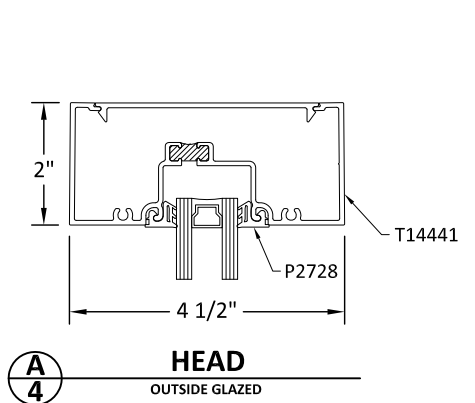
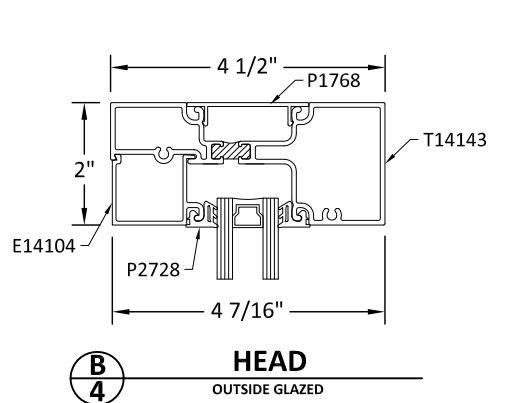
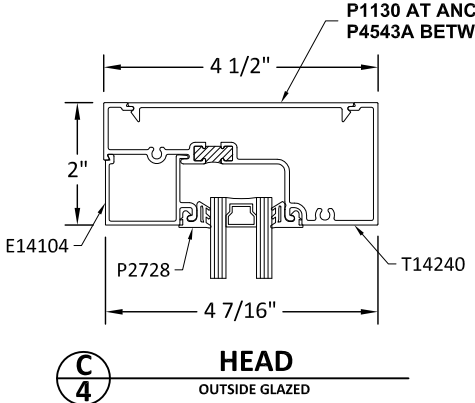
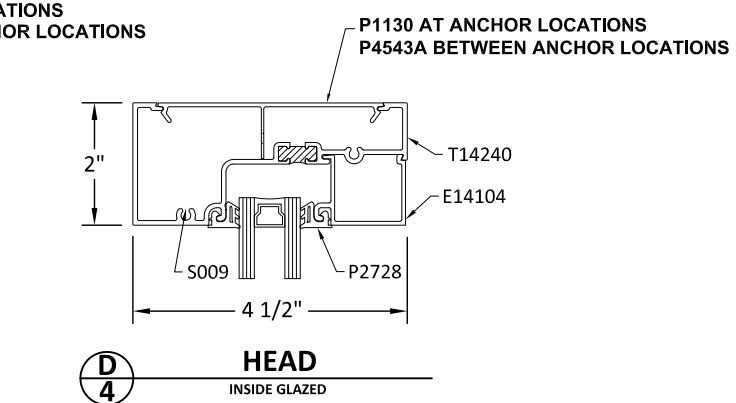
SCALE: **NTS**

DWG. #: **TLI004**

SECTION **4**

OF 11

NOTE:
THERMALLY BROKEN T14000
PROFILES SHOWN. NON-THERMALLY
BROKEN E14000 PROFILES ARE
QUALIFIED FOR THE SAME DETAILS
AND RATINGS.



4/22/2019 6:23 PM
s:\projects\tubelite, inc\fb-19-0251.1 - fbc submittal - sf, ww, cw doors and cassette\dwgs\et-14000\tli004_2019-04-19.dwg

VERTICAL DETAILS AND DESIGN PRESSURES

TUBELITE®
DEPENDABLE
LEADERS IN ECO-EFFICIENT STOREFRONT,
CURTAINWALL AND ENTRANCE SYSTEMS

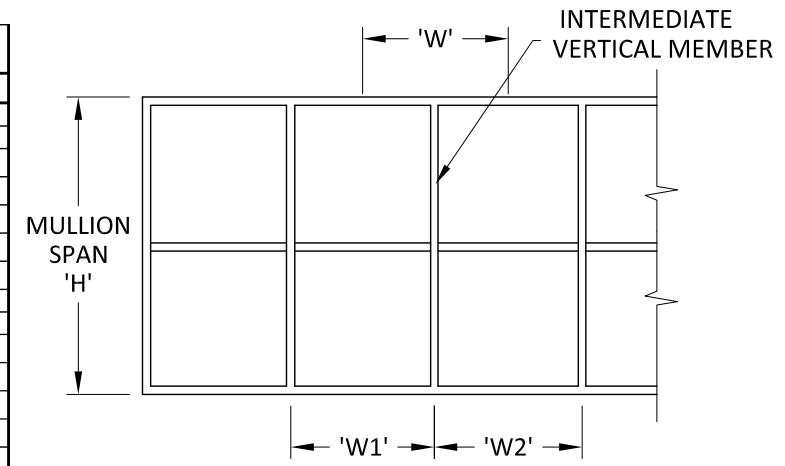
3056 WALKER RIDGE DRIVE N.W.
WALKER, MICHIGAN 49544
PH: 800 866 2227 FX: 616 301 0008

TITLE: 14000 SERIES STOREFRONT FRAMING OUTSIDE GLAZED VERTICAL DETAILS AND DESIGN PRESSURES

PREPARED BY: BUILDING DROPS, INC.
398 E. DANIA BEACH BLVD., STE. 338
DANIA BEACH, FL 33004
PH: (954) 399-8478
FAX: (954) 744-4738
WEB: www.buildingdrops.com

DESIGN PRESSURE TABLE - WITH STEEL REINFORCING												
MULLION SPAN 'H' (INCHES)	MULLION TRIBUTARY WIDTH 'W' (INCHES)											
	27	30	33	36	39	42	45	48	51	54	57	60
72	45.0	45.0	45.0	45.0	45.0	45.0	45.0	45.0	45.0	45.0	45.0	45.0
78	45.0	45.0	45.0	45.0	45.0	45.0	45.0	45.0	45.0	45.0	45.0	45.0
84	45.0	45.0	45.0	45.0	45.0	45.0	45.0	45.0	45.0	45.0	45.0	45.0
90	45.0	45.0	45.0	45.0	45.0	45.0	45.0	45.0	45.0	45.0	45.0	45.0
96	45.0	45.0	45.0	45.0	45.0	45.0	45.0	45.0	45.0	45.0	45.0	44.4
99	45.0	45.0	45.0	45.0	45.0	45.0	45.0	45.0	45.0	45.0	43.7	42.4
102	45.0	45.0	45.0	45.0	45.0	45.0	45.0	45.0	45.0	43.4	41.9	40.7
108	45.0	45.0	45.0	45.0	45.0	45.0	45.0	43.6	41.8	40.2	38.8	37.5
114	45.0	45.0	45.0	45.0	45.0	45.0	43.6	41.6	39.8	38.3	36.9	35.7
120	45.0	45.0	45.0	45.0	44.8	42.3	40.0	38.1	36.5	35.0	33.7	-
126	45.0	45.0	45.0	45.0	42.3	39.8	37.7	35.9	34.3	32.9	-	-
132	45.0	45.0	45.0	42.8	40.0	37.7	35.7	33.9	32.3	-	-	-
138	45.0	45.0	43.8	40.7	38.0	35.8	33.8	32.1	-	-	-	-
144	45.0	45.0	41.8	38.7	36.2	34.0	32.1	30.5	-	-	-	-
146	45.0	44.7	41.1	38.1	35.6	33.5	31.6	30.0	-	-	-	-
150	45.0	43.1	39.3	36.1	33.5	31.2	29.3	-	-	-	-	-
156	42.4	38.2	34.9	32.1	29.7	27.7	-	-	-	-	-	-

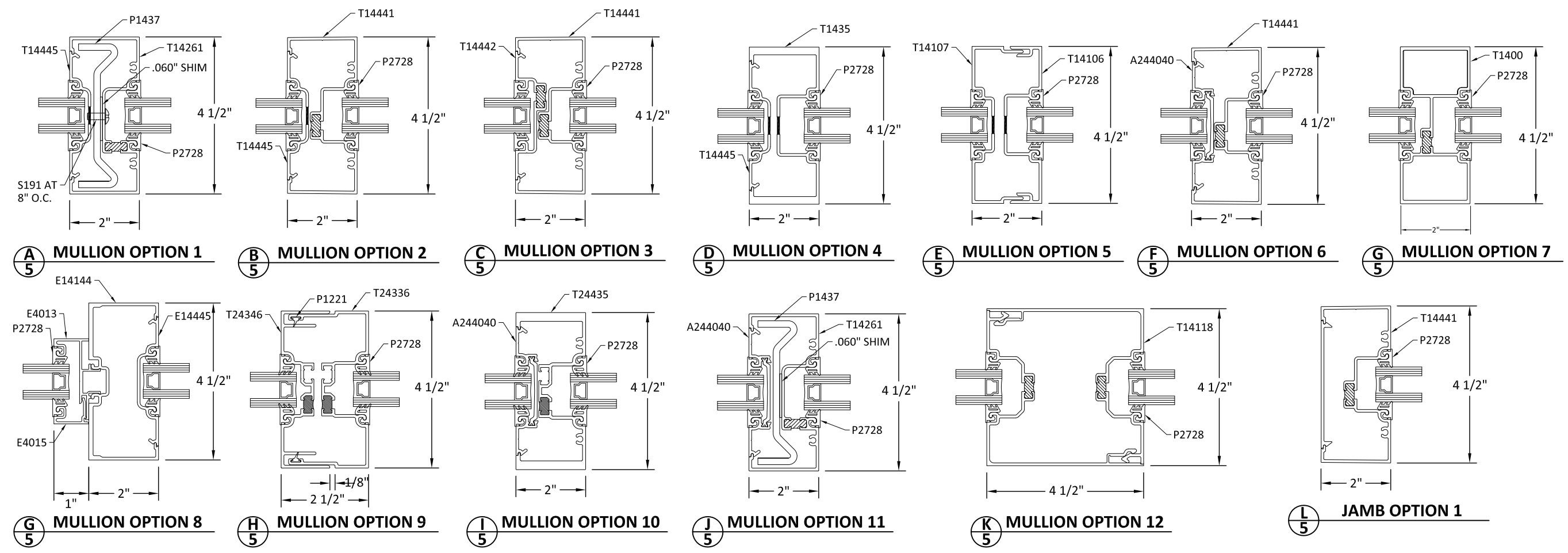
DESIGN PRESSURE TABLE - WITH NO STEEL REINFORCING													
MULLION SPAN 'H' (INCHES)	MULLION TRIBUTARY WIDTH 'W' (INCHES)												
	27	30	33	36	39	42	45	48	51	54	57	60	
72	45.0	45.0	45.0	45.0	45.0	45.0	45.0	45.0	45.0	45.0	44.4	43.6	42.9
78	45.0	45.0	45.0	45.0	45.0	45.0	45.0	43.2	41.7	40.3	39.2	38.3	37.5
84	45.0	45.0	45.0	45.0	42.9	40.8	39.0	37.5	36.2	35.1	-	-	-
90	45.0	45.0	44.5	41.7	39.3	37.3	35.6	34.1	32.8	-	-	-	-
96	45.0	44.4	41.2	38.5	36.2	34.3	32.7	31.3	-	-	-	-	-
99	45.0	42.9	39.7	37.0	34.8	33.0	31.4	30.0	-	-	-	-	-
102	45.0	41.3	37.8	34.9	32.5	30.5	28.8	-	-	-	-	-	-
108	38.3	34.6	31.7	29.3	27.2	25.5	-	-	-	-	-	-	-
114	34.2	31.0	28.3	26.2	24.3	22.8	-	-	-	-	-	-	-
120	27.8	25.1	22.9	21.2	19.7	-	-	-	-	-	-	-	-
126	23.9	21.6	19.8	18.2	-	-	-	-	-	-	-	-	-
132	20.8	18.8	17.1	15.8	-	-	-	-	-	-	-	-	-
138	18.2	16.4	15.0	-	-	-	-	-	-	-	-	-	-
144	16.0	14.4	13.2	-	-	-	-	-	-	-	-	-	-
146	15.3	13.8	-	-	-	-	-	-	-	-	-	-	-
150	14.1	12.7	-	-	-	-	-	-	-	-	-	-	-
156	12.5	11.3	-	-	-	-	-	-	-	-	-	-	-



G 4 ELEVATION A

TRIBUTARY WIDTH (W) = $\frac{W1 + W2}{2}$

NOTE: THERMALLY BROKEN T14000 PROFILES SHOWN. NON-THERMALLY BROKEN E14000 PROFILES ARE QUALIFIED FOR THE SAME DETAILS AND RATINGS.



THE INSTALLATION DETAILS DESCRIBED HEREIN ARE GENERIC AND MAY NOT REFLECT ACTUAL CONDITIONS FOR A SPECIFIC SITE. IF SITE CONDITIONS CAUSE INSTALLATION TO DEVIATE FROM THE REQUIREMENTS DETAILED HEREIN, A LICENSED ENGINEER OR ARCHITECT SHALL PREPARE SITE SPECIFIC DOCUMENTS FOR USE WITH THIS DOCUMENT

HERMES F. NORERO
LICENSED PROFESSIONAL ENGINEER
No. 73778
STATE OF FLORIDA

HERMES F. NORERO, P.E.
FLORIDA P.E. No. 73778
BUILDING DROPS, INC.
398 E. DANIA BEACH BLVD. # 338
DANIA BEACH, FL 33004
FBPE CERT. OF AUTHORIZATION No. 29578

FL #: **FL16992**

DATE: **03.26.19**

DWG. BY: **RV** CHK. BY: **HFN**

SCALE: **NTS**

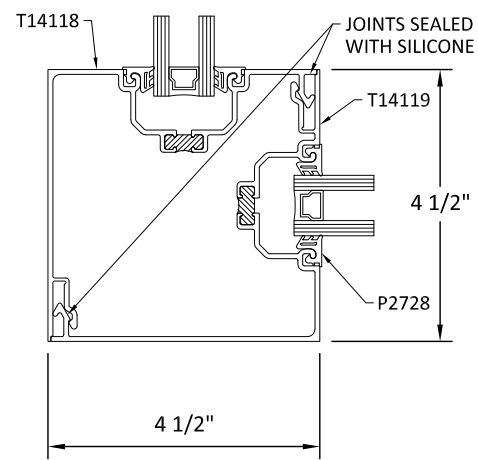
DWG. #: **TLI004**

SECTION **5** OF 11

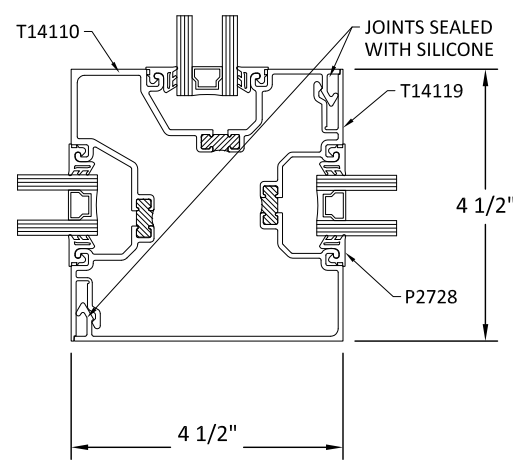
4/22/2019 6:23 PM

s:\projects\tubelite, inc\lbc-19-0251.1 - fbc submittal - sf, ww, cw doors and cassette\dwgs\lbc-19-0251.1-004\lbc-19-0251.1-004.dwg

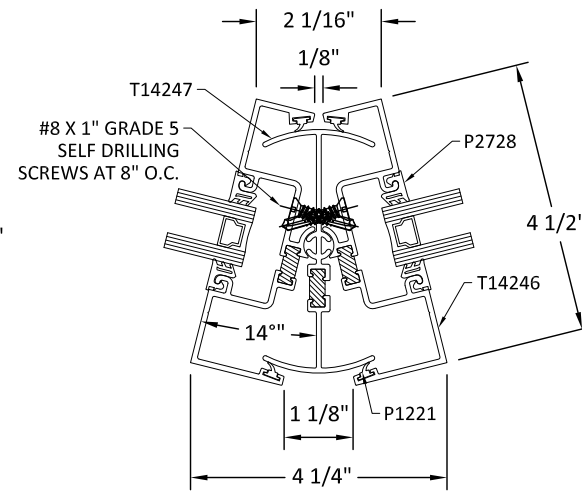
CORNER DETAILS



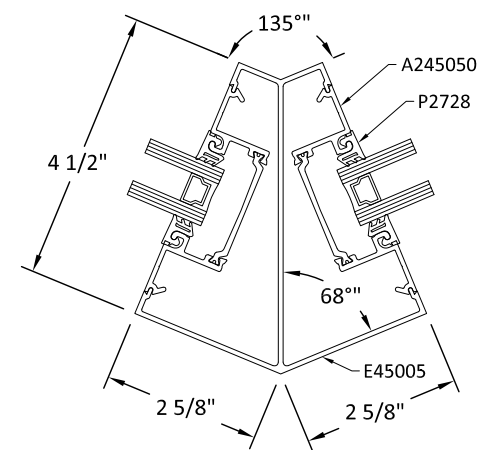
A
6 90° CORNER DETAIL



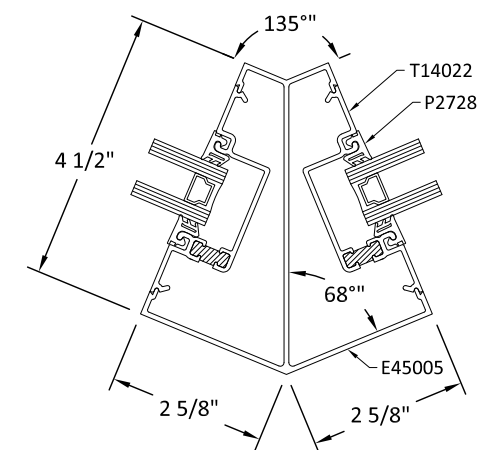
B
6 90° CORNER DETAIL
TRIPLE



C
6 VARIABLE CORNER



D
6 135° CORNER DETAIL



E
6 135° CORNER DETAIL

NOTE:
CORNER CONDITIONS ARE
QUALIFIED FOR DESIGN PRESSURE
VALUES AND SIZES SHOWN ON
SHEET 5 FOR VERTICAL MEMBERS
WITHOUT STEEL REINFORCEMENT

TUBELITE®
DEPENDABLE
LEADERS IN ECO-EFFICIENT STOREFRONT,
CURTAINWALL AND ENTRANCE SYSTEMS

3056 WALKER RIDGE DRIVE N.W.
WALKER, MICHIGAN 49544
PH: 800 866 2227 FX: 616 301 0008

TITLE:
14000 SERIES
STOREFRONT FRAMING
OUTSIDE GLAZED CORNER DETAILS

PREPARED BY:
BUILDING DROPS, INC.
398 E. DANIA BEACH BLVD., STE. 338
DANIA BEACH, FL 33004
PH: (954)399-8478
FAX: (954)744-4738
WEB: www.buildingdrops.com

REMARKS	BY	DATE

THE INSTALLATION DETAILS DESCRIBED HEREIN ARE GENERIC AND MAY NOT REFLECT ACTUAL CONDITIONS FOR A SPECIFIC SITE. IF SITE CONDITIONS CAUSE INSTALLATION TO DEVIATE FROM THE REQUIREMENTS DETAILED HEREIN, A LICENSED ENGINEER OR ARCHITECT SHALL PREPARE SITE SPECIFIC DOCUMENTS FOR USE WITH THIS DOCUMENT

HERMES F. NORERO, P.E.
FLORIDA P.E. No. 73778
BUILDING DROPS, INC
398 E. DANIA BEACH BLVD. # 338
DANIA BEACH, FL 33004
FBPE CERT. OF AUTHORIZATION No. 29578

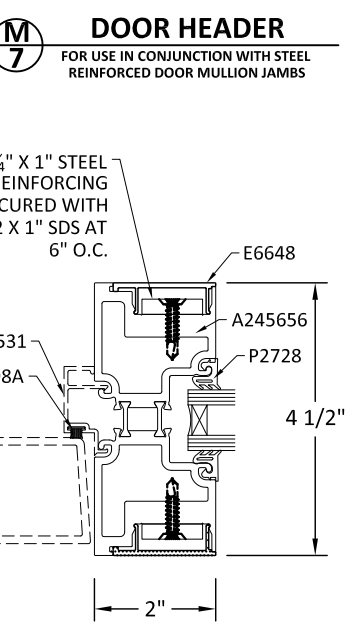
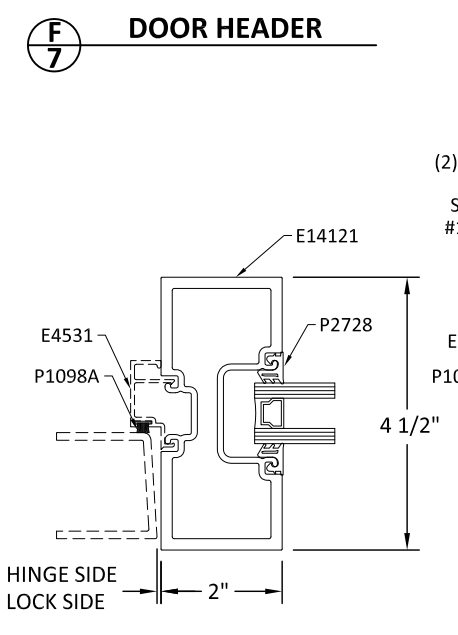
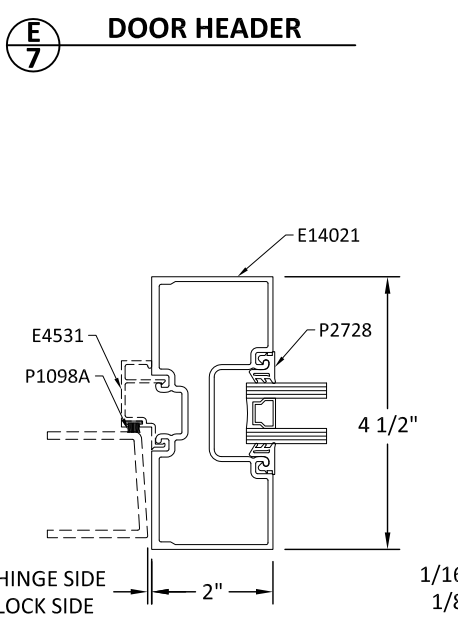
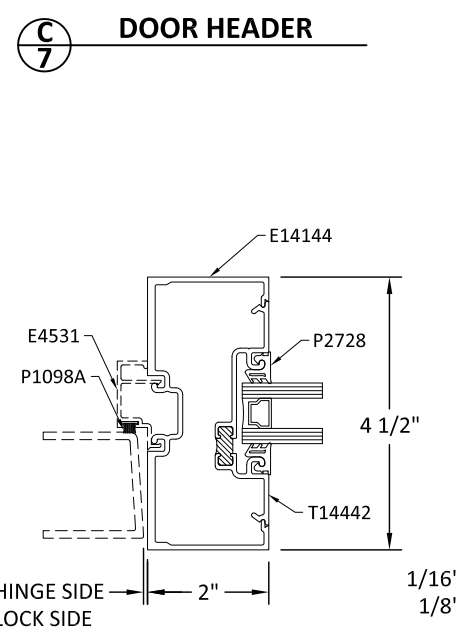
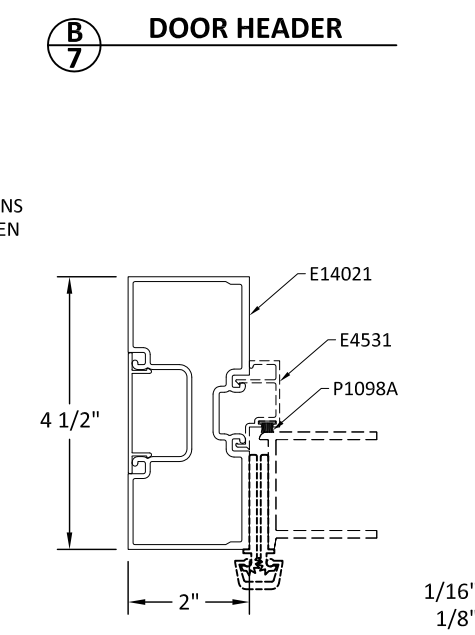
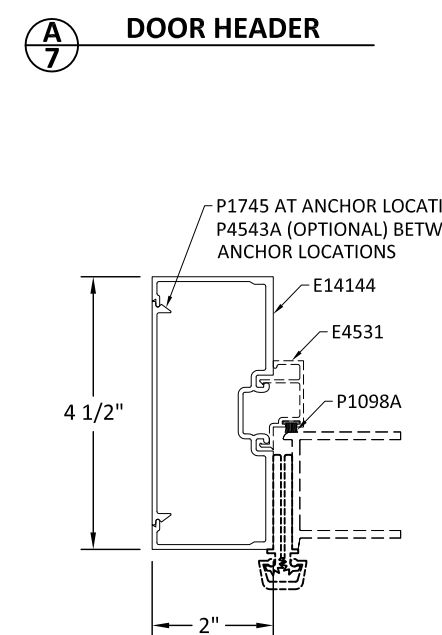
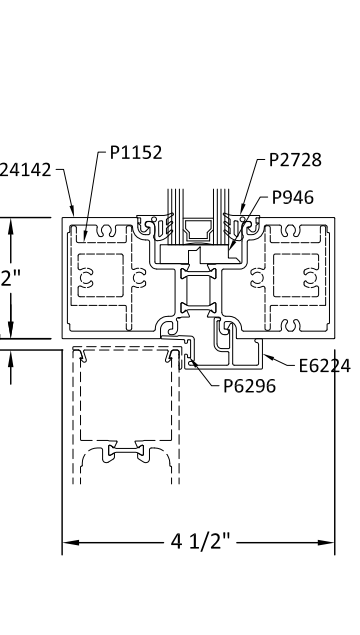
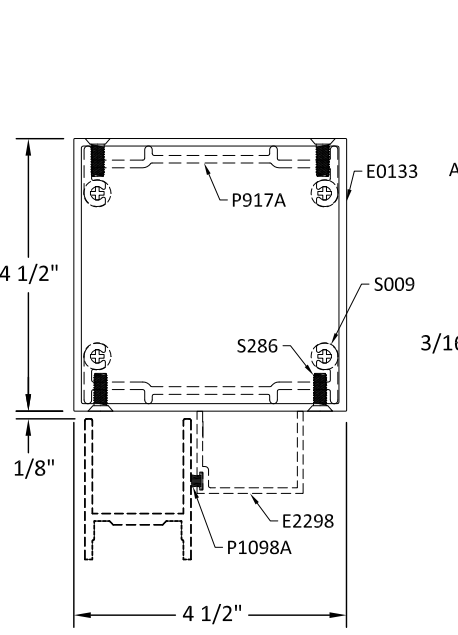
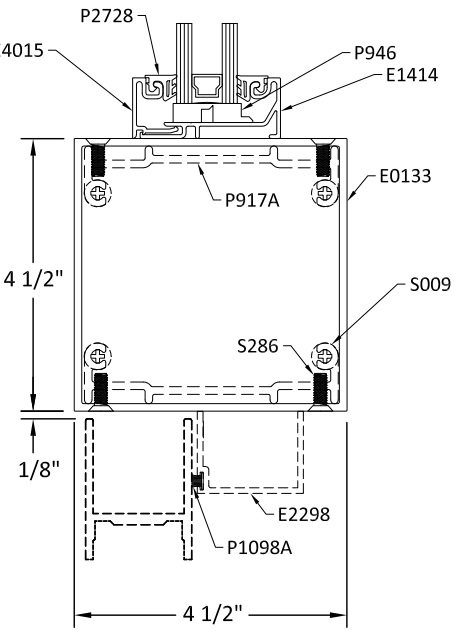
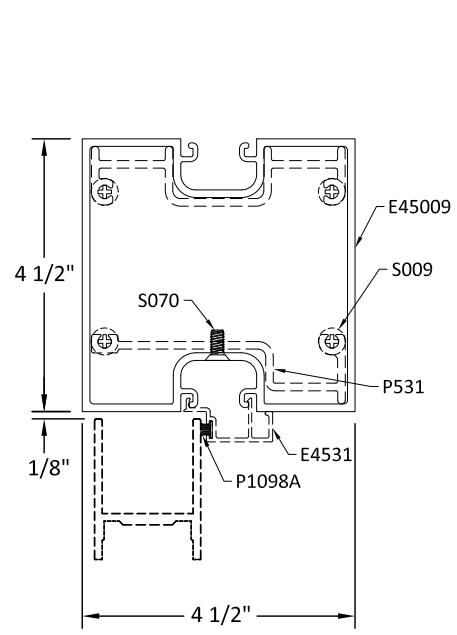
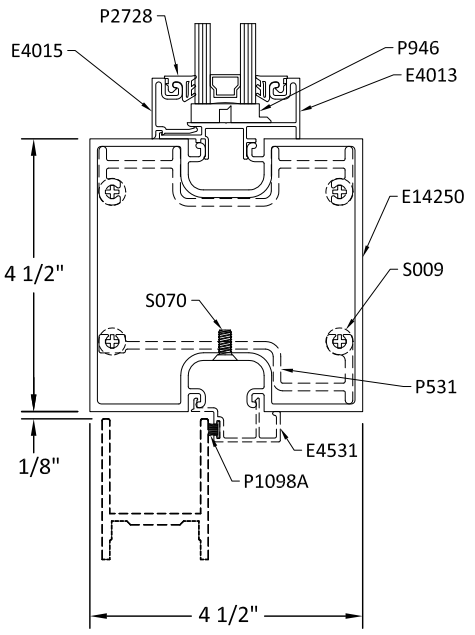
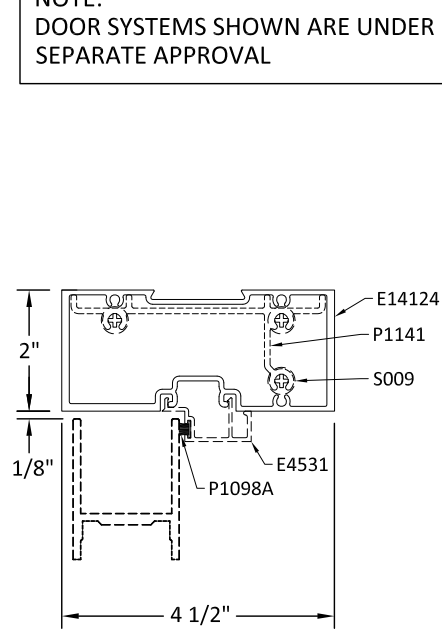
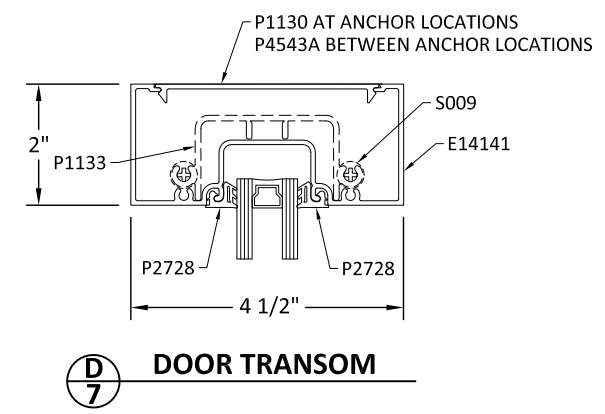
FL #:	FL16992
DATE:	03.26.19
DWG. BY:	RV
CHK. BY:	HFN
SCALE:	NTS
DWG. #:	TLI004
SECTION	6

TITLE: 14000 SERIES STOREFRONT FRAMING OUTSIDE GLAZED DOOR DETAILS

PREPARED BY: BUILDING DROPS, INC.
 398 E. DANIA BEACH BLVD., STE. 338
 DANIA BEACH, FL 33004
 PH: (954) 399-8478
 FAX: (954) 744-4738
 WEB: www.buildingdrops.com

DOOR DETAILS

NOTE:
 DOOR SYSTEMS SHOWN ARE UNDER SEPARATE APPROVAL



REMARKS	BY	DATE

THE INSTALLATION DETAILS DESCRIBED HEREIN ARE GENERIC AND MAY NOT REFLECT ACTUAL CONDITIONS FOR A SPECIFIC SITE. IF SITE CONDITIONS CAUSE INSTALLATION TO DEVIATE FROM THE REQUIREMENTS DETAILED HEREIN, A LICENSED ENGINEER OR ARCHITECT SHALL PREPARE SITE SPECIFIC DOCUMENTS FOR USE WITH THIS DOCUMENT

HERMES F. NORERO, P.E.
 FLORIDA P.E. No. 73778
 BUILDING DROPS, INC.
 398 E. DANIA BEACH BLVD. # 338
 DANIA BEACH, FL 33004
 FBPE CERT. OF AUTHORIZATION No. 29578

FL #: **FL16992**

DATE: **03.26.19**

DWG. BY: **RV** CHK. BY: **HFN**

SCALE: **NTS**

DWG. #: **TLI004**

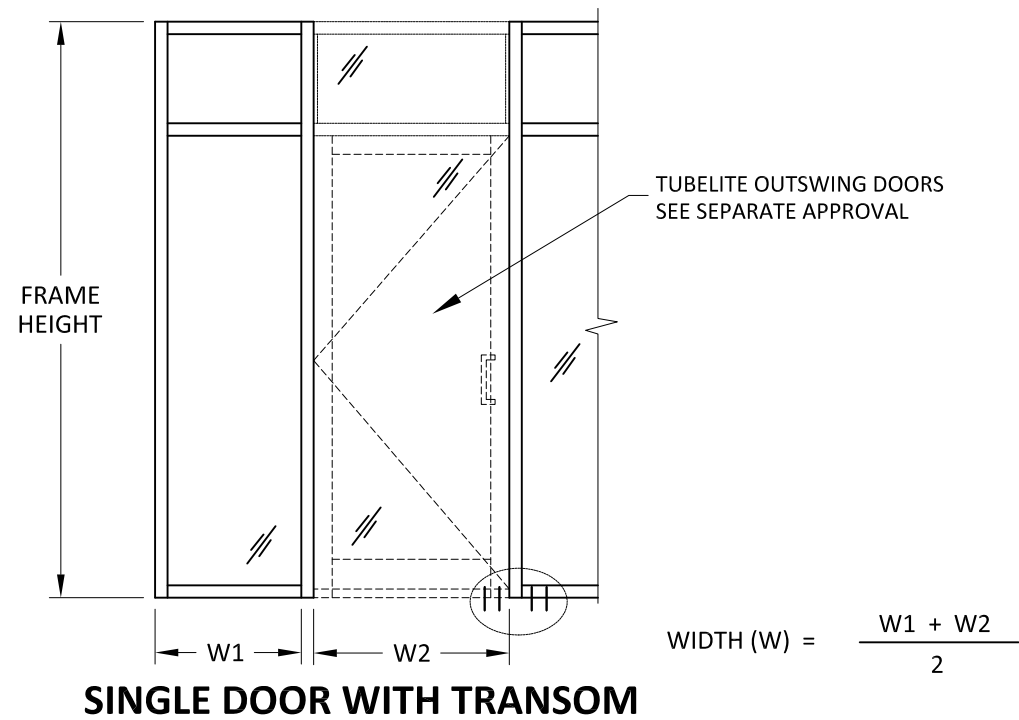
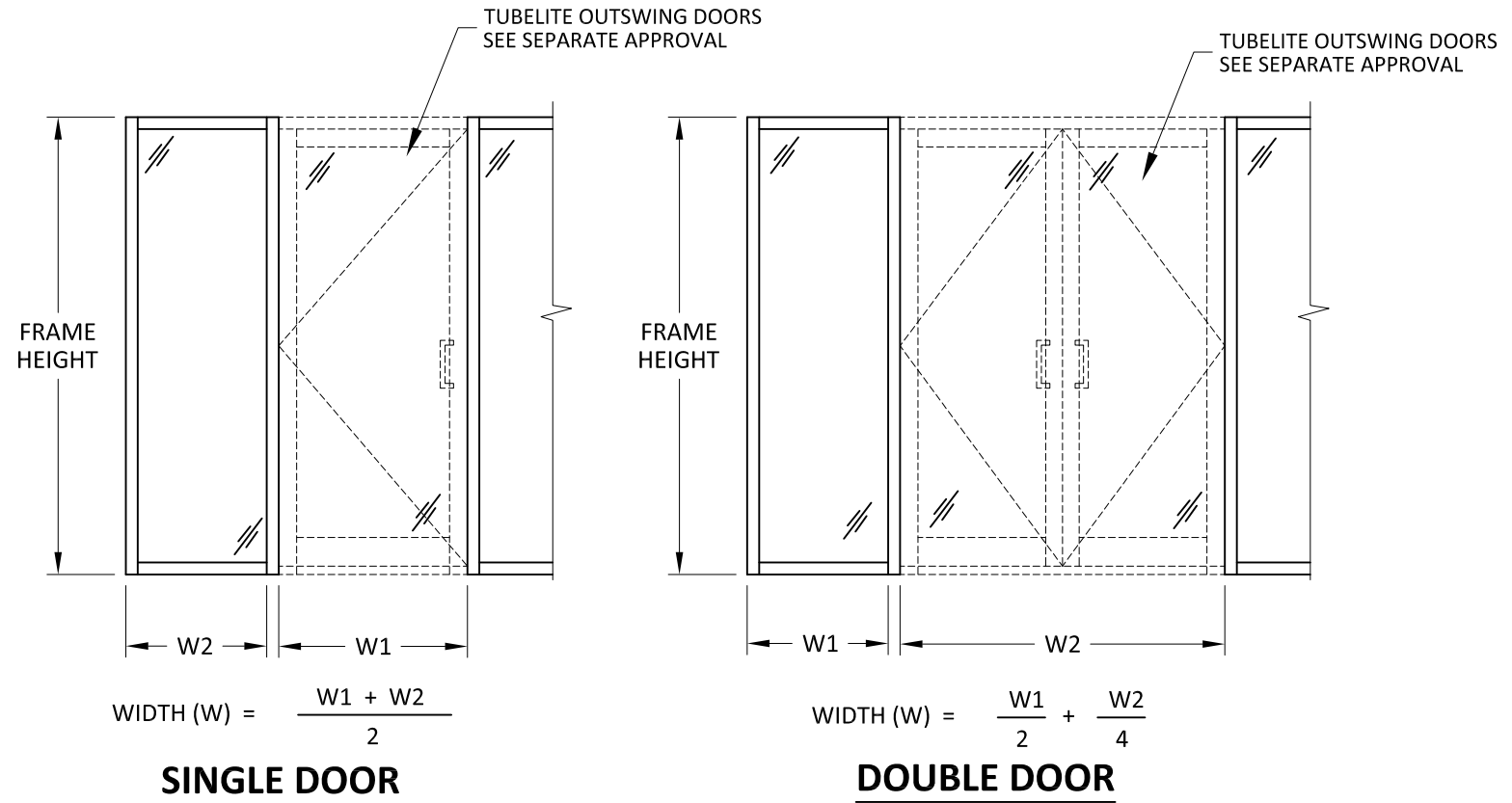
4/22/2019 6:23 PM
 s:\projects\tubelite, inc\bc-19-0251.1 - fbc submittal - sf, ww, cw doors and cassette\dwgs\et-14000\tli004_2019-04-19.dwg

DOOR MULLION DESIGN PRESSURE TABLES

DOOR MULLION LOAD CAPACITY - WITHOUT STEEL (DETAIL I/7, J/7 OR K/7)		
NOMINAL DIMS.		LOADS - PSF
WIDTH (W)	FRAME HEIGHT	EXT. (+) INT. (-)
24	84	45.0
30		45.0
36		45.0
42		45.0
48		44.4
54		41.5
60	38.2	
24	90	45.0
30		45.0
36		45.0
42		44.1
48		40.4
54		37.0
60	33.3	
24	96	45.0
30		45.0
36		45.0
42		40.6
48		36.5
54		32.5
60	29.2	
24	102	45.0
30		45.0
36		41.6
42		35.6
48		31.2
54		27.7
60	24.9	
24	108	45.0
30		42.0
36		35.0
42		30.0
48		26.3
54		23.3
24	114	44.6
30		35.7
36		29.8
42		25.5
48		22.3
54		19.1
24	120	38.3
30		30.6
36		25.5
42		21.9
48		19.1
48		19.1

DOOR MULLION LOAD CAPACITY WITH STEEL (DETAIL L/7)		
NOMINAL DIMS.		LOADS - PSF
WIDTH (W)	FRAME HEIGHT	EXT. (+) INT. (-)
24	102	45.0
30		45.0
36		45.0
42		45.0
48		45.0
54		45.0
60	45.0	
24	108	45.0
30		45.0
36		45.0
42		45.0
48		45.0
54		44.4
60	41.2	
24	114	45.0
30		45.0
36		45.0
42		45.0
48		45.0
54		44.2
60	41.2	
24	120	45.0
30		45.0
36		45.0
42		45.0
48		45.0
54		41.4
60	38.5	
24	126	45.0
30		45.0
36		45.0
42		45.0
48		42.4
54		38.9
60	36.1	
24	132	45.0
30		45.0
36		45.0
42		44.6
48		40.1
54		36.6
60	33.9	
24	138	45.0
30		45.0
36		45.0
42		42.3
48		38.0
54		34.7
60	31.2	
24	144	45.0
30		45.0
36		45.0
42		40.2
48		35.4
54		31.5
60	28.4	

NOTE:
1. USE DETAIL M/7 WHEN USING STEEL REINFORCED MULLION WITH A TRANSOM



TUBELITE
DEPENDABLE
LEADERS IN ECO-EFFICIENT STOREFRONT,
CURTAINWALL AND ENTRANCE SYSTEMS

3056 WALKER RIDGE DRIVE N.W.
WALKER, MICHIGAN 49544
PH: 800 866 2227 FX: 616 301 0008

TITLE: 14000 SERIES STOREFRONT FRAMING OUTSIDE GLAZED EXPANSION VERTICAL DETAILS AND DESIGN PRESSURES

PREPARED BY: BUILDING DROPS, INC.
398 E. DANIA BEACH BLVD., STE. 338
DANIA BEACH, FL 33004
PH: (954) 399-8478
FAX: (954) 744-4738
WEB: www.buildingdrops.com

REMARKS	BY	DATE

THE INSTALLATION DETAILS DESCRIBED HEREIN ARE GENERIC AND MAY NOT REFLECT ACTUAL CONDITIONS FOR A SPECIFIC SITE. IF SITE CONDITIONS CAUSE INSTALLATION TO DEVIATE FROM THE REQUIREMENTS DETAILED HEREIN, A LICENSED ENGINEER OR ARCHITECT SHALL PREPARE SITE SPECIFIC DOCUMENTS FOR USE WITH THIS DOCUMENT

HERMES F. NORERO, P.E.
FLORIDA P.E. No. 73778
BUILDING DROPS, INC.
398 E. DANIA BEACH BLVD. # 338
DANIA BEACH, FL 33004
FBPE CERT. OF AUTHORIZATION No. 29578

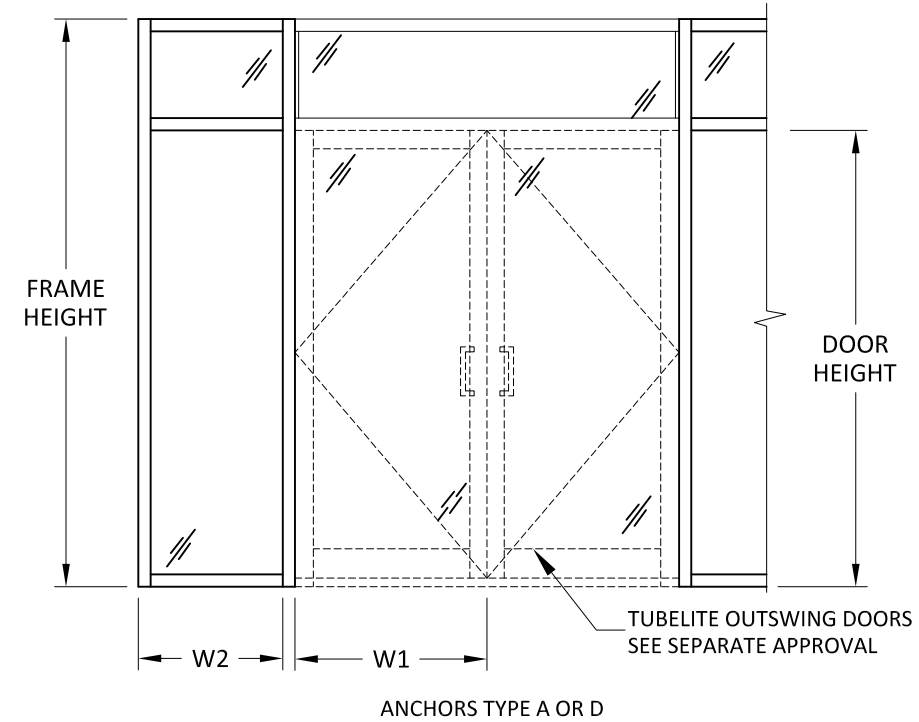
FL #:	FL16992
DATE:	03.26.19
DWG. BY:	RV
CHK. BY:	HFN
SCALE:	NTS
DWG. #:	TLI004
SECTION	8

DOOR MULLION DESIGN PRESSURE TABLES

DOUBLE DOOR MULLION WITH TRANSOM LOAD CAPACITY - WITHOUT STEEL (DETAIL I/7, J/7 OR K/7)				
NOMINAL DIMS.			LOADS - PSF	
FRAME HEIGHT INCHES	DOOR LEAF WIDTH (W1)	SIDELITE WIDTH (W2)	EXT. (+) INT. (-)	
84	36	30	42.9	
		36	41.5	
		42	40.2	
		48	38.2	
		54	36.4	
		60	34.7	
	42	30	40.2	
		36	38.2	
		42	36.4	
		48	34.7	
		54	33.2	
		60	31.8	
48	30	36.4		
	36	34.7		
	42	33.2		
	48	31.8		
	90	36	30	38.9
			36	37.0
42			35.0	
42		48	33.3	
		54	31.7	
		60	30.2	
96	36	30	35.0	
		36	33.3	
		42	31.7	
	42	48	30.2	
		30	31.7	
		36	30.2	
102	36	36	32.5	
		42	30.8	
		48	29.2	
	42	54	27.8	
		30	30.8	
		36	29.2	
108	36	42	27.8	
		48	27.8	
		30	27.8	
	42	30	29.3	
		36	27.7	
		42	26.2	
114	36	48	24.9	
		60	38.9	
		30	24.7	
	42	36	23.3	
		36	21.0	
		30	21.0	

DOUBLE DOOR MULLION WITH TRANSOM LOAD CAPACITY - WITH STEEL (DETAIL L/7)			
NOMINAL DIMS.			LOADS - PSF
FRAME HEIGHT INCHES	DOOR LEAF WIDTH (W1)	SIDELITE WIDTH (W2)	EXT. (+) INT. (-)
102	36	30	45.0
		36	45.0
		42	45.0
		48	45.0
		54	45.0
		60	45.0
	42	30	45.0
		36	45.0
		42	45.0
		48	45.0
		54	44.6
		60	43.7
48	30	45.0	
	36	45.0	
	42	44.6	
	48	43.7	
	54	42.9	
	60	42.3	
108	36	36	45.0
		42	45.0
		48	44.4
	42	54	43.1
		60	42.0
		30	45.0
114	42	36	44.4
		42	43.1
		48	42.0
	48	54	41.0
		60	40.1
		30	43.1
120	36	36	42.0
		42	41.0
		48	40.1
	42	54	39.3
		60	38.6
		36	44.2
126	36	42	42.6
		48	41.2
		54	40.0
	42	60	38.9
		30	42.6
		36	41.2
132	42	30	42.6
		36	41.2
		48	40.0
	48	42	40.0
		48	38.9
		54	37.9
138	36	60	37.0
		30	40.0
		36	38.9
	42	42	37.9
		48	37.0
		54	36.2
144	36	54	36.2
		60	36.2
		30	39.8
	42	36	38.5
		42	37.3
		48	36.2
150	36	54	35.2
		60	34.3
		30	37.3
	42	36	36.2
		42	35.2
		48	34.3

DOUBLE DOOR MULLION WITH TRANSOM LOAD CAPACITY - WITH STEEL (DETAIL L/7)			
NOMINAL DIMS.			LOADS - PSF
FRAME HEIGHT INCHES	DOOR LEAF WIDTH (W1)	SIDELITE WIDTH (W2)	EXT. (+) INT. (-)
126	36	36	38.9
		42	37.4
		48	36.1
		54	34.9
		60	33.8
		30	37.4
	42	36	36.1
		42	34.9
		48	33.8
		54	32.6
		30	34.9
		36	33.8
132	36	42	32.6
		42	35.2
		48	33.9
	42	54	32.5
		60	31.0
		30	35.2
138	42	36	33.9
		42	32.5
		48	31.0
	48	36	31.0
		36	34.7
		42	32.9
144	36	54	29.7
		30	32.9
		36	31.2
	42	42	29.7
		42	29.7
		36	31.5
150	36	42	29.8
		48	28.4
		30	29.8
	42	36	28.4
		30	29.8
		36	28.4



DOUBLE DOOR WITH TRANSOM

NOTE:
1. USE DETAIL M/7 WHEN USING STEEL REINFORCED MULLION WITH A TRANSOM

TUBELITE®
DEPENDABLE
LEADERS IN ECO-EFFICIENT STOREFRONT, CURTAINWALL AND ENTRANCE SYSTEMS

3056 WALKER RIDGE DRIVE N.W.
WALKER, MICHIGAN 49544
PH: 800 866 2227 FX: 616 301 0008

TITLE: 14000 SERIES STOREFRONT FRAMING OUTSIDE GLAZED EXPANSION VERTICAL DETAILS AND DESIGN PRESSURES
PREPARED BY: BUILDING DROPS, INC.
398 E. DANIA BEACH BLVD., STE. 338
DANIA BEACH, FL 33004
PH: (954) 399-8478
FAX: (954) 744-4738
WEB: www.buildingdrops.com

REMARKS	BY	DATE

THE INSTALLATION DETAILS DESCRIBED HEREIN ARE GENERIC AND MAY NOT REFLECT ACTUAL CONDITIONS FOR A SPECIFIC SITE. IF SITE CONDITIONS CAUSE INSTALLATION TO DEVIATE FROM THE REQUIREMENTS DETAILED HEREIN, A LICENSED ENGINEER OR ARCHITECT SHALL PREPARE SITE SPECIFIC DOCUMENTS FOR USE WITH THIS DOCUMENT

HERMES F. NORERO, P.E.
FLORIDA P.E. No. 73778
BUILDING DROPS, INC
398 E. DANIA BEACH BLVD. # 338
DANIA BEACH, FL 33004
FBPE CERT. OF AUTHORIZATION No. 29578

FL #: **FL16992**
DATE: **03.26.19**
DWG. BY: **RV** | CHK. BY: **HFN**
SCALE: **NTS**
DWG. #: **TLI004**
SECTION **9** OF 11

4/22/2019 6:23 PM
s:\projects\tubelite, inc\bc-19-0251.1 - fbc submittal - sf, ww, cw doors and cassette\dwgs\et-14000\title.dwg

ANCHOR SCHEDULE

TYPE	ANCHOR	SUBSTRATE	MIN. EMBEDMENT	MIN. EDGE DISTANCE	MAX. SHIM SIZE	HEAD ANCHOR QTY PER VERTICAL UP TO 8' HEIGHT	HEAD ANCHOR QTY PER VERTICAL UP TO 13' HEIGHT	SILL ANCHOR QTY PER VERTICAL UP TO 8' HEIGHT	SILL ANCHOR QTY PER VERTICAL UP TO 13' HEIGHT
A	1/4" ELCO ULTRACON (CARBON STEEL)	3000 PSI CONCRETE MIN. OR GROUT FILLED CMU PER ASTM C-90 W/ MIN. F'C=2000 PSI	1.75"	2.5"	0.25"	4	4	4	4
B	1/4" ITW TAPCON (CARBON OR STAINLESS STEEL)		1.75"	2.5"	0.25"	4	6	4	6
C	1/4" HILTI KWIK-CON II+ (CARBON OR STAINLESS STEEL)		1"	2.5"	0.25"	4	4	4	4
E	#14 WOOD SCREW	2X WOOD MIN. S.G.=0.55	1.5"	1"	0.25"	4	6	4	6
G	1/4" GR. 5 SELF-TAPPING/DRILLING SCREW	MIN. 18 GA STEEL STUD (0.0478") 33 KSI OR MIN. 0.090" 6063-T5 ALUMINUM	3 THREADS*	1"	0.25"	2	4	4	4
H	3/8" POWERS TAPPER (CARBON STEEL)	3000 PSI CONCRETE MIN.	1.25"	2.5"	1/2"	2	4	2	4
I	3/8" POWERS TAPPER (CARBON STEEL)	GROUT FILLED CMU PER ASTM C-90. MIN. F'C=2000 PSI	1.75"	3"	1/2"	2	4	2	4
J	3/8" ITW LDT (CARBON STEEL)	3000 PSI CONCRETE MIN.	1.5"	2.5"	1/2"	2	4	2	4
K	3/8" ITW LDT (CARBON STEEL)	GROUT FILLED CMU PER ASTM C-90. MIN. F'C=2000 PSI	1.5"	3"	1/2"	2	4	2	4
L	3/8" ITW TRUBOLT WEDGE (CARBON STEEL OR SS)	2000 PSI CONCRETE MIN.	1.5"	2.5"	1/2"	2	2	2	4
M	3/8" LAG SCREW	2X WOOD MIN. S.G.=0.55	1.5"	1.5"	1/2"	4	6	4	6
N	5/16" GR. 5 SELF-TAPPING/DRILLING SCREW	MIN. 18 GA STEEL STUD (0.0478") 33 KSI OR MIN. 0.090" 6063-T5 ALUMINUM	3 THREADS*	1"	1/2"	2	4	2	4

INSTALLATION NOTES:

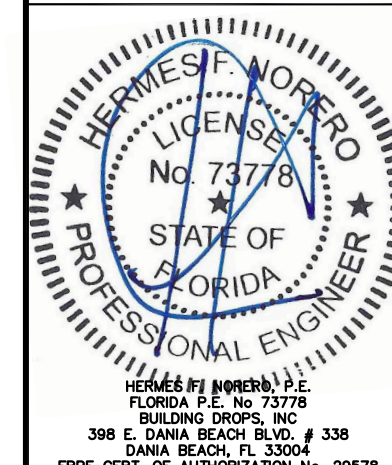
- *FOR STEEL AND ALUMINUM, ANCHOR SHALL BE OF SUFFICIENT LENGTH TO ACHIEVE 3 THREADS OF PENETRATION BEYOND THE WALL OF THE METAL.
- ANCHOR QUANTITIES SHOWN ABOVE ARE FOR INTERMEDIATE VERTICALS. AT JAMBS, USE HALF OF THE QUANTITY SHOWN ABOVE. FOR INTERMEDIATE VERTICALS WITH DOOR JAMB ON ONE SIDE, PLACE THE TOTAL NUMBER OF ANCHORS REQUIRED THROUGH THE SIDELITE.
- ONE (1) INSTALLATION ANCHOR IS REQUIRED AT EACH ANCHOR LOCATION SHOWN.
- THE NUMBER OF INSTALLATION ANCHORS DEPICTED IS THE MINIMUM NUMBER OF ANCHORS TO BE USED FOR PRODUCT INSTALLATION.
- INSTALL INDIVIDUAL INSTALLATION ANCHORS WITHIN A TOLERANCE OF ±1/2 INCH OF THE DEPICTED LOCATION IN THE ANCHOR LAYOUT DETAIL (I.E., WITHOUT CONSIDERATION OF TOLERANCES). TOLERANCES ARE NOT CUMULATIVE FROM ONE INSTALLATION ANCHOR TO THE NEXT.
- SHIM AS REQUIRED AT EACH INSTALLATION ANCHOR WITH LOAD BEARING SHIM(S). MAXIMUM ALLOWABLE SHIM STACK TO BE 1/2 INCH. SHIM WHERE SPACE OF 1/16 INCH OR GREATER OCCURS. SHIM(S) SHALL BE CONSTRUCTED OF HIGH DENSITY PLASTIC OR BETTER.
- MINIMUM EMBEDMENT AND EDGE DISTANCE EXCLUDE WALL FINISHES, INCLUDING BUT NOT LIMITED TO STUCCO, FOAM, BRICK VENEER, AND SIDING.
- INSTALLATION ANCHORS AND ASSOCIATED HARDWARE MUST BE MADE OF CORROSION RESISTANT MATERIAL OR HAVE A CORROSION RESISTANT COATING.
- INSTALLATION ANCHORS SHALL BE INSTALLED IN ACCORDANCE WITH ANCHOR MANUFACTURER'S INSTALLATION INSTRUCTIONS, AND ANCHORS SHALL NOT BE USED IN SUBSTRATES WITH STRENGTHS LESS THAN THE MINIMUM STRENGTH SPECIFIED BY THE ANCHOR MANUFACTURER.

TITLE: 14000 SERIES STOREFRONT FRAMING SCHEDULE & INSTALLATION NOTES

PREPARED BY: BUILDING DROPS, INC.
398 E. DANIA BEACH BLVD., STE. 338
DANIA BEACH, FL 33004
PH: (954)399-8478
FAX: (954)744-4738
WEB: www.buildingdrops.com

REMARKS	BY	DATE

THE INSTALLATION DETAILS DESCRIBED HEREIN ARE GENERIC AND MAY NOT REFLECT ACTUAL CONDITIONS FOR A SPECIFIC SITE. IF SITE CONDITIONS CAUSE INSTALLATION TO DEVIATE FROM THE REQUIREMENTS DETAILED HEREIN, A LICENSED ENGINEER OR ARCHITECT SHALL PREPARE SITE SPECIFIC DOCUMENTS FOR USE WITH THIS DOCUMENT



FL #: **FL16992**

DATE: **03.26.19**

DWG. BY: **RV** CHK. BY: **HFN**

SCALE: **NTS**

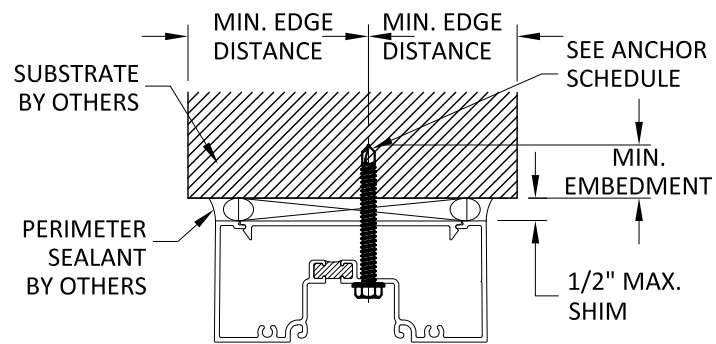
DWG. #: **TLI004**

SECTION **10** OF 11

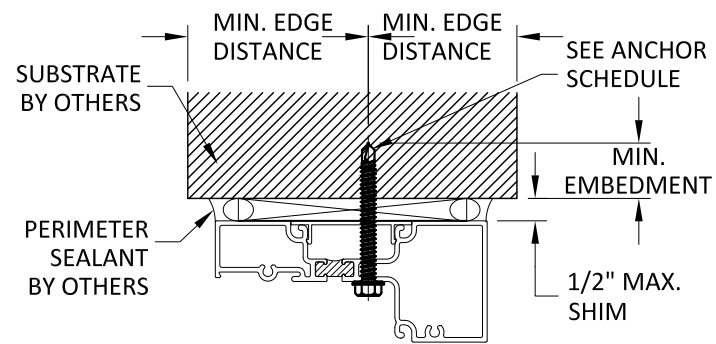
4/22/2019 6:23 PM
s:\projects\tubelite, inc\bc-19-0251.1 - fbc submittal - sf, ww, cw doors and cassette\dwgs\et-14000\tli004 2019-04-19.dwg

4/22/2019 6:23 PM

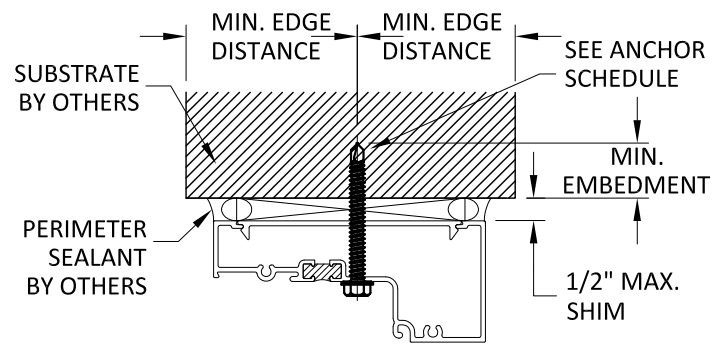
s:\projects\tubelite, inc\lbc-19-0251.1 - fbc submittal - sf, ww, cw doors and cassette\dwgs\lbc-14000\lbc1004_2019-04-19.dwg



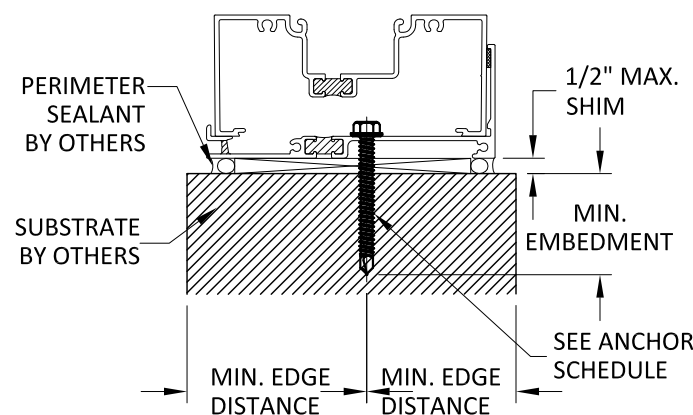
A HEAD ANCHOR DETAIL
11



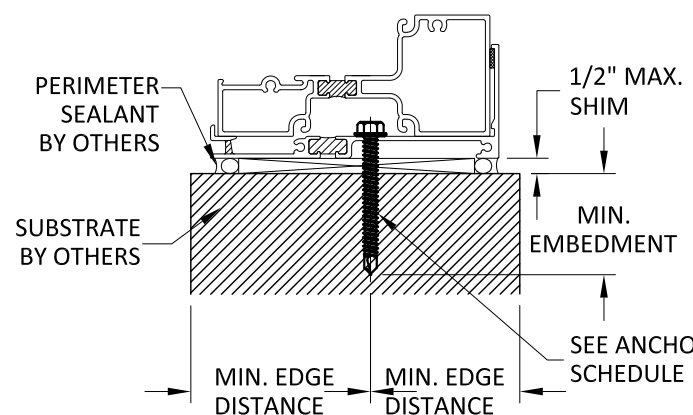
B HEAD ANCHOR DETAIL
11



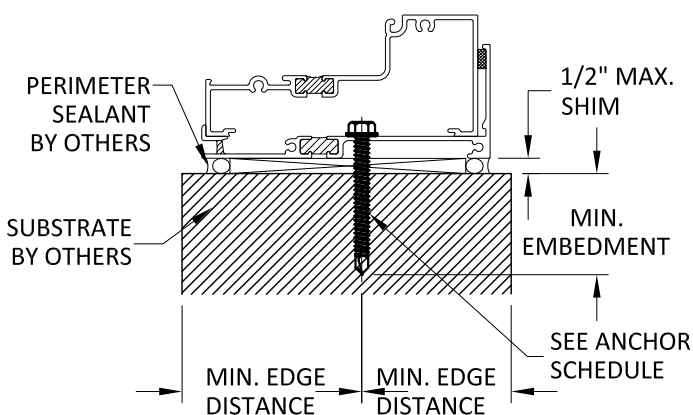
C HEAD ANCHOR DETAIL
11



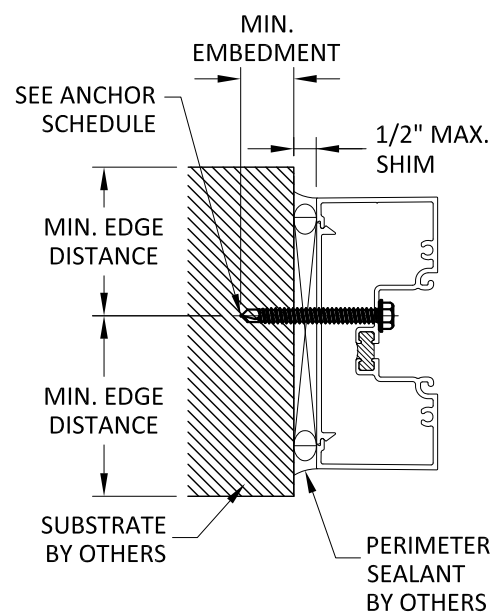
D SILL ANCHOR DETAIL
11



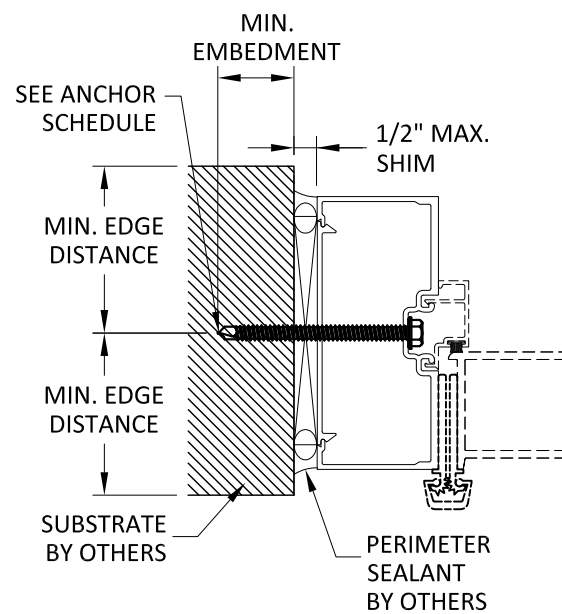
E SILL ANCHOR DETAIL
11



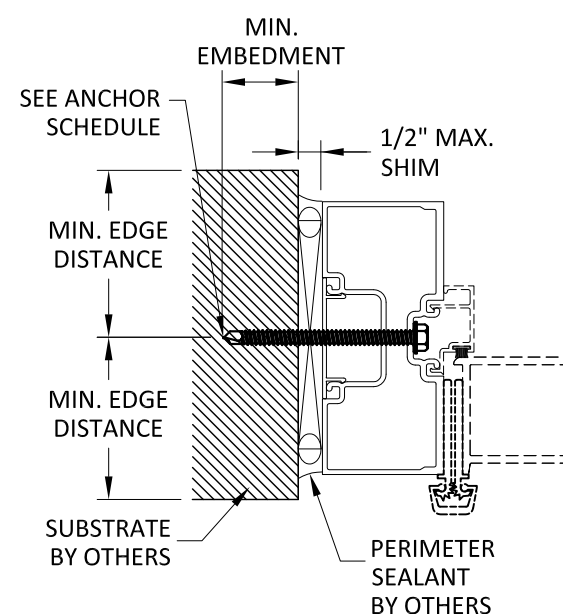
F SILL ANCHOR DETAIL
11



G JAMB ANCHOR DETAIL
11



H JAMB ANCHOR DETAIL
11



I JAMB ANCHOR DETAIL
11

- NOTES:
- SEE SHEET 10 FOR ADDITIONAL ANCHOR INFORMATION.
 - THERMALLY BROKEN T14000 PROFILES SHOWN. NON-THERMALLY BROKEN E14000 PROFILES ARE QUALIFIED FOR THE SAME DETAILS AND RATINGS.
 - DOORS UNDER SEPARATE APPROVAL.

TUBELITE®
DEPENDABLE

LEADERS IN ECO-EFFICIENT STOREFRONT,
CURTAINWALL AND ENTRANCE SYSTEMS

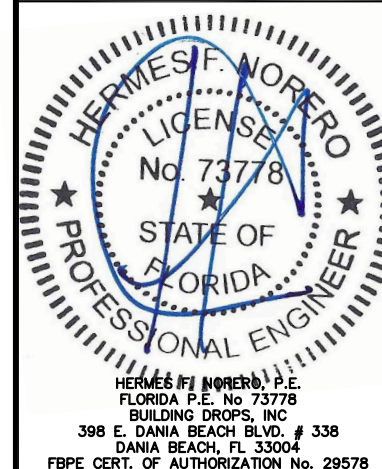
3056 WALKER RIDGE DRIVE N.W.
WALKER, MICHIGAN 49544
PH: 800 866 2227 FX: 616 301 0008

TITLE: 14000 SERIES STOREFRONT FRAMING ANCHOR DETAILS

PREPARED BY: BUILDING DROPS, INC.
398 E. DANIA BEACH BLVD., STE. 338
DANIA BEACH, FL 33004
PH: (954) 399-8478
FAX: (954) 744-4738
WEB: www.buildingdrops.com

REMARKS	BY	DATE

THE INSTALLATION DETAILS DESCRIBED HEREIN ARE GENERIC AND MAY NOT REFLECT ACTUAL CONDITIONS FOR A SPECIFIC SITE. IF SITE CONDITIONS CAUSE INSTALLATION TO DEVIATE FROM THE REQUIREMENTS DETAILED HEREIN, A LICENSED ENGINEER OR ARCHITECT SHALL PREPARE SITE SPECIFIC DOCUMENTS FOR USE WITH THIS DOCUMENT



FL #: **FL16992**

DATE: **03.26.19**

DWG. BY: **RV** CHK. BY: **HFN**

SCALE: **NTS**

DWG. #: **TLI004**

SECTION **11**